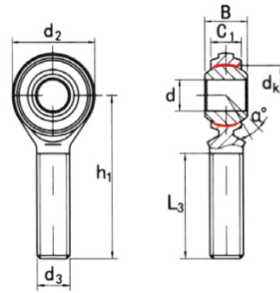


CM...T(d 4.826~19.05)



auswählen Anfrage		Part No.		Abmessungen (mm)									Lord ratings	Gewicht
		Right hand	Left hand	d3	d3 UNF-3A	B	C1	d2	h1	L3 s min	dk	eine	KN	kg
CM3T	CML3T	4.826	10-32	7.92	5.94	15.875	31.75	19.05	11.1	10	8.02	0.014		
CM 4T	CML4T	6.35	V4-28	9.53	6.35	19.05	39.67	25.4	12.7	13.5	16.082	0.018		
CM5T	CML5T	7.938	5/16-24	11.1	7.92	22.23	47.63	31.75	15.88	11	28.693	0.032		
CM6T	CML6T	9.525	3/8-24	12.7	9.12	25.4	49.23	31.75	18.26	11	38.371	0.05		
CM 7T	CML7T	11.113	7/16-20	14.27	10.31	28.58	53.98	34.93	20.62	10.5	41.676	0.058		
CM8T	CML8T	12.7	V2-20	15.88	11.5	33.32	61.93	38.1	23.8	10	67.299	0.109		
CM 10T	CML10T	15.875	5/8-18	19.05	12.29	38.1	66.68	41.28	28.58	13	75.271	0.163		
CM 12T	CML12T	19.05	3/4-16	22.23	15.06	44.45	73.03	44.45	33.32	12	113.642	0.259		