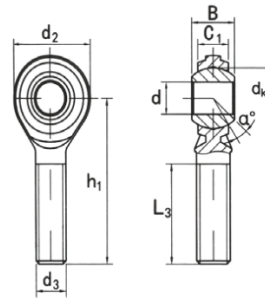


CM...,CM...S(d 4.826~19.05)



auswählen Anfrage		Part No.		Abmessungen (mm)									Lord ratings KN	Gewicht kg
		Right hand	Left hand	d3	d <sub>3</sub> UNF-3A	B	C <sub>1</sub>	d <sub>2</sub>	h <sub>1</sub>	L <sub>3</sub> s min	d <sub>k</sub>	eine ≈		
CM 3*	CML3*	4.826	10-32	7.92	5.94	15.88	31.75	19.05	11.1	10	5.355	0.014		
CM4*	CML4*	6.35	1/4-28	9.53	6.35	19.05	39.67	25.4	12.7	13.5	9.839	0.018		
CM 5*	CML5*	7.938	5/16-24	11.1	7.92	22.23	47.63	31.75	15.88	11	15.91	0.032		
CM 6	CML6	9.325	3/8-24	12.7	9.12	25.4	49.23	31.75	18.26	11	22.542	0.05		
CM 7	CML7	11.113	7/16-20	14.27	10.31	28.58	53.98	34.93	20.62	10.5	28.223	0.068		
CM 8	CML8	12.7	1/2-20	15.88	11.5	33.32	61.93	38.1	23.8	10	37.087	0.109		
CM 10	CML10	15.875	5/8-18	19.05	12.29	38.1	66.68	41.28	28.58	13	43.203	0.163		
CM 12	CML12	19.05	3/4-16	22.23	15.06	44.45	73.03	44.45	33.32	12	63.193	0.259		