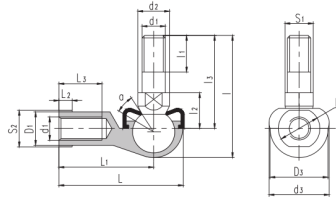


# SQ..-RS(d 5□22)



auswählen	Anfrage	Lager Nr.	Abmessungen (mm)																	Tragfähigkeit (kN)		Gewicht kg
			d <sub>1</sub>	d <sub>2</sub>	d <sub>3</sub>	l	l <sub>1</sub>	l <sub>2</sub>	l <sub>3</sub>	S <sub>1</sub>	L	L <sub>1</sub>	L <sub>2</sub>	L <sub>3</sub>	D <sub>1</sub>	D <sub>2</sub>	D <sub>3</sub>	S <sub>2</sub>	a°	Static load ratings kN		
SQ5-RS	M5	9	19	29	8	10	21	7	35	27	4	14	9	11	16	9	25	2.2	0.026			
SQ6-RS	M6	10	20	35.5	11	11	26	8	40	30.5	5	14	10	13	19	11	25	3.5	0.039			
SQ8-RS	M8	12	24	42.5	12	14	31	10	48	36.5	5	17	12.5	16	23	14	25	6.6	0.068			
SQ10-RS	M10xl.25	14	30	50.5	15	17	37	11	57	43.5	6.5	21	15	19	27	17	25	10	0.112			
SQ12-RS	M12xl.25	17	32	57.5	17	19	42	15	66	50.5	6.5	25	17.5	22	31	19	25	16	0.164			
SQ14-RS	M14xl.5	19	38	73.5	22	21.5	56	17	75	57.5	8	26	20	25	35	22	25	19	0.254			
SQ16-RS	M16xl.5	22	44	79.5	23	23.5	60	19	84	64.5	8	32	22	27	39	22	20	26	0.336			
SQ18RS	M18xl.5	23	45	90	25	26.5	68	20	93	71	10	34	25	31	44	27	20	33	0.464			
SQ20RS	M20xl.5	27	50	90	25	27	68	24	99	77	10	35	27.5	34	44	30	20	45	0.538			
SQ22RS	M22xl.5	27	52	95	26	28	70	24	109	84	12	41	30	37	50	32	16	48	0.713			