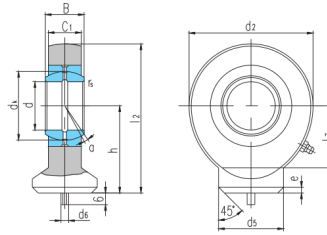


# SK...E(d 10□12)



auswählen Anfrage	Lager Nr.	Abmessungen (mm)													Tragfähigkeit (kN)		Gewicht kg
		d3	B	d <sub>k</sub>	C <sub>1</sub>	d <sub>2</sub>	h	l <sub>2</sub>	l <sub>7</sub>	d <sub>5</sub>	d <sub>6</sub>	e	r <sub>s</sub>	a°	Kr	Kor	
SK10E <sup>1)</sup>	10	9	16	7	29	24	38.5	15	15	3	2	0.3	12	8.1	15	0.041	
SK12E <sup>1)</sup>	12	10	18	8	34	27	44	17.5	17.5	3	2	0.3	10	10	21	0.066	