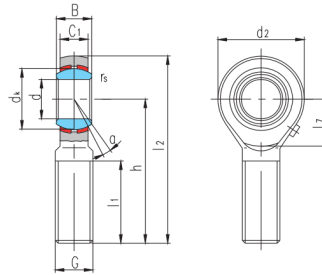


# SAZP...S(d 4.83~25.4)



auswählen	Anfrage	Lager Nr.	Abmessungen (mm)											Tragfähigkeit (kN)			Gewicht kg
			d3	B	d <sub>k</sub>	C <sub>1</sub> max	d <sub>2</sub>	G	h	l <sub>1</sub> s min	l <sub>2</sub>	l <sub>7</sub>	rs min	a°	Kr	Kor	
SAZP4S <sup>1)</sup>	4.83	7.92	n.i	6.35	15.88	10-32	31.75	19.05	39.7	—	3	10	3.4	3.8	0.013		
SAZP4S <sup>1)</sup>	0.19	0.312	0.437	0.25	0.625	10-32	1.25	0.75	1.563	—	0.012	10	3.4	3.8	0.013		
SAZP6S <sup>1)</sup>	6.35	9.53	12.7	7.14	19.05	1/4-28	39.67	25.4	49.2	—	0.3	13	4.5	6.6	0.022		
SAZP6S <sup>1)</sup>	0.25	0.375	0.5	0.281	0.75	1/4-28	1.562	1	1.937	—	0.012	13	4.5	6.6	0.022		
SAZP7S	7.94	11.1	15.88	8.74	22.23	5/16-24	47.63	31.75	58.72	—	0.3	10	6.9	8.4	0.037		
SAZP7S	0.3125	0.437	0.625	0.344	0.875	5/16-24	1.875	1.25	2.312	—	0.012	10	6.9	8.4	0.037		
SAZP9S	9.53	12.7	18.26	10.31	25.4	3/8-24	49.23	31.75	61.93	—	0.6	9	9.4	10	0.055		
SAZP9S	0.375	0.5	0.719	0.406	1	3/8-24	1.938	1.25	2.438	—	0.024	9	9.4	10	0.055		
SAZP11S	11.11	14.27	20.62	11.1	28.58	7/16-20	53.98	34.93	68.28	—	0.6	11	11	13	0.078		
SAZP11S	0.4375	0.562	0.812	0.437	1.125	7/16-20	2.125	1.375	2.688	—	0.024	11	11	13	0.078		
SAZP12S	12.7	15.88	23.81	12.7	33.32	1/2-20	61.93	38.1	78.59	—	0.6	9	15	19	0.12		
SAZP12S	0.5	0.625	0.937	0.5	1.312	1/2-20	2.438	1.5	3.094	—	0.024	9	15	19	0.12		
SAZP15S	15.88	19.05	28.58	14.27	38.1	5/8-18	66.68	41.28	85.73	18.2	0.6	11	20	21	0.18		
SAZP15S	0.625	0.75	1.125	0.562	1.5	5/8-18	2.625	1.625	3.375	0.717	0.024	11	20	21	0.18		
SAZP19S	19.05	22.23	33.32	17.45	44.45	3/4-16	73.03	44.45	95.25	20.9	0.6	10	29	29	0.29		
SAZP19S	0.75	0.875	1.312	0.687	1.75	3/4-16	2.875	1.75	3.75	0.823	0.024	10	29	29	0.29		
SAZP25S	25.4	34.93	47.63	25.4	69.85	5/4-12	104.78	53.98	139.7	33.9	0.6	14	60	101	1.1		
SAZP25S	1	1.375	1.875	1	2.75	5/4-12	4.125	2.125	5.5	1.335	0.024	14	60	101	1.1		