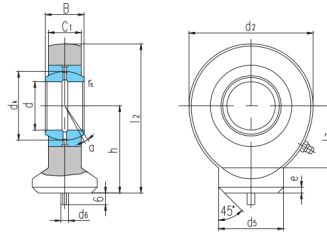


# SK...E,ES



auswählen Anfrage	Bearing number	Dimension mm														load rating kN		Gewicht kg
		d3	B	d <sub>k</sub>	C <sub>1</sub>	d <sub>2</sub>	h	l <sub>2</sub>	l <sub>7</sub>	d <sub>5</sub>	d <sub>6</sub>	e	r <sub>s</sub>	a°	dynamic load	static load		
SK10E <sup>1)</sup>	10	9	16	7	29	24	38.5	15	15	3	2	0.3	12	8.1	15	0.041		
SK12E <sup>1)</sup>	12	10	18	8	34	27	44	17.5	17.5	3	2	0.3	10	10	21	0.066		
SK15ES <sup>2)</sup>	15	12	22	10	40	31	51	20	21	4	2.5	0.3	8	16	32	0.12		
SK16ES <sup>2)</sup>	16	14	25	11	46	35	58	23	24	4	3	0.3	10	21	40	0.19		
SK17ES <sup>2)</sup>	17	14	25	11	46	35	58	23	24	4	3	0.3	10	21	40	0.18		
SK20ES	20	16	29	13	53	38	64.5	27.5	27.5	4	3	0.3	9	30	54	0.26		
SK25ES	25	20	35.5	17	64	45	77	33	33.5	4	4	0.6	7	48	72	0.45		
SK30ES	30	22	40.7	19	73	51	87.5	37.5	40	4	4	0.6	6	62	95	0.67		
SK35ES	35	25	47	21	82	61	102	43	47	4	4	0.6	6	79	125	1.02		
SK40ES	40	28	53	23	92	69	115	48	52	4	5	0.6	7	99	156	1.4		
SK45ES	45	32	60	27	102	77	128	52	58	6	5	0.6	7	127	208	1.93		
SK50ES	50	35	66	30	112	88	144	59	62	6	6	0.6	6	156	250	2.69		
SK60ES	60	44	80	38	135	100	167.5	72.5	70	6	8	1	6	245	390	4.6		
SK70ES	70	49	92	42	160	115	195	85.5	80	6	10	1	6	313	510	7		
SK80ES	80	55	105	47	180	141	231	98	95	6	10	1	6	400	620	11		